

# Kalgoorlie-Boulder Youth Precinct

Consultation Outcomes  
and Master Plan



City of  
**Kalgoorlie  
Boulder**

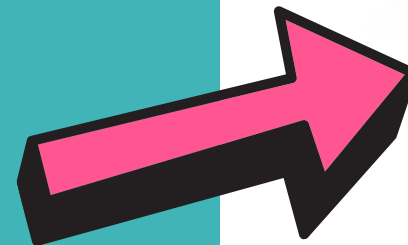


Kalgoorlie-Boulder  
**Youth Council**

# Historical Consultation

- Kal City Centre Project
- School visits
- HackED
- Youth Project
- Community engagement
- Youth services engagement
- Goldfields Youth Forum
- Youth Affairs Council WA (YACWA)
- Police
- Comparable metro and regional LGA facilities

**2018 Kingsbury Hub Concept**

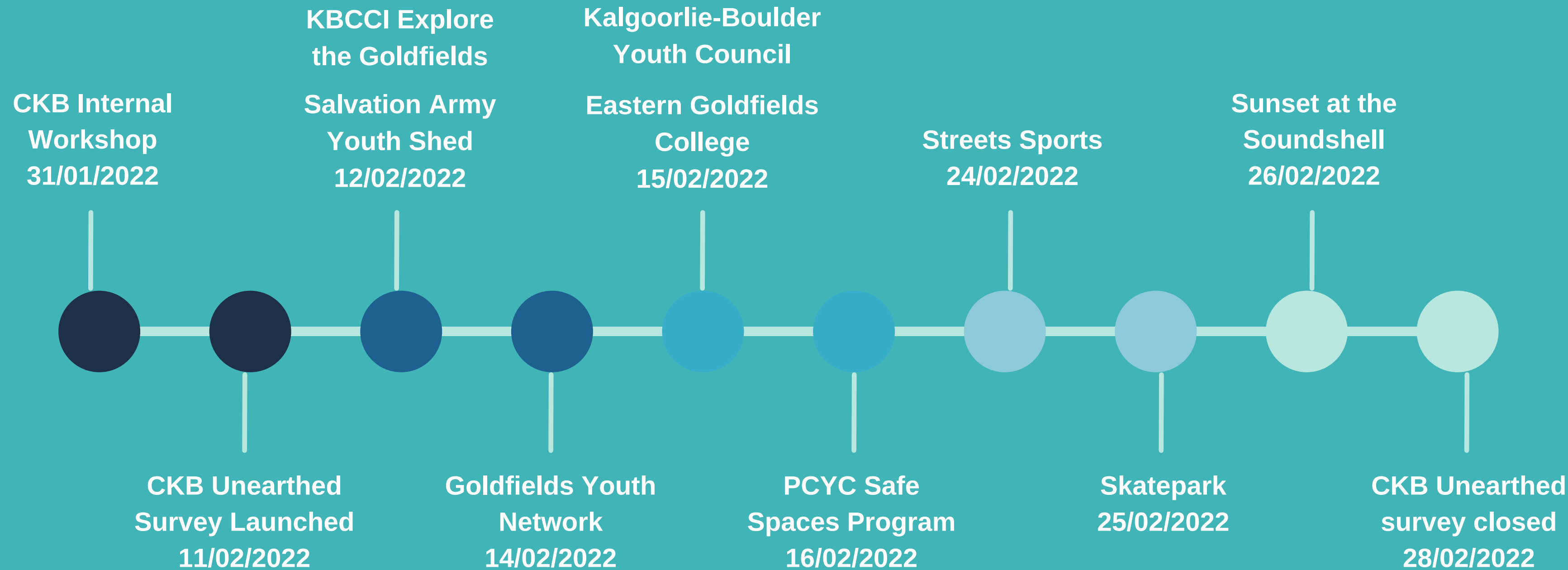


# Current Consultation

After awarding designers Playce to create a master concept plan for the precinct. The City, Kalgoorlie-Boulder Youth Council and Playce developed an ideas layout. This layout went out to comment through community workshops and an online survey through CKB Unearthed



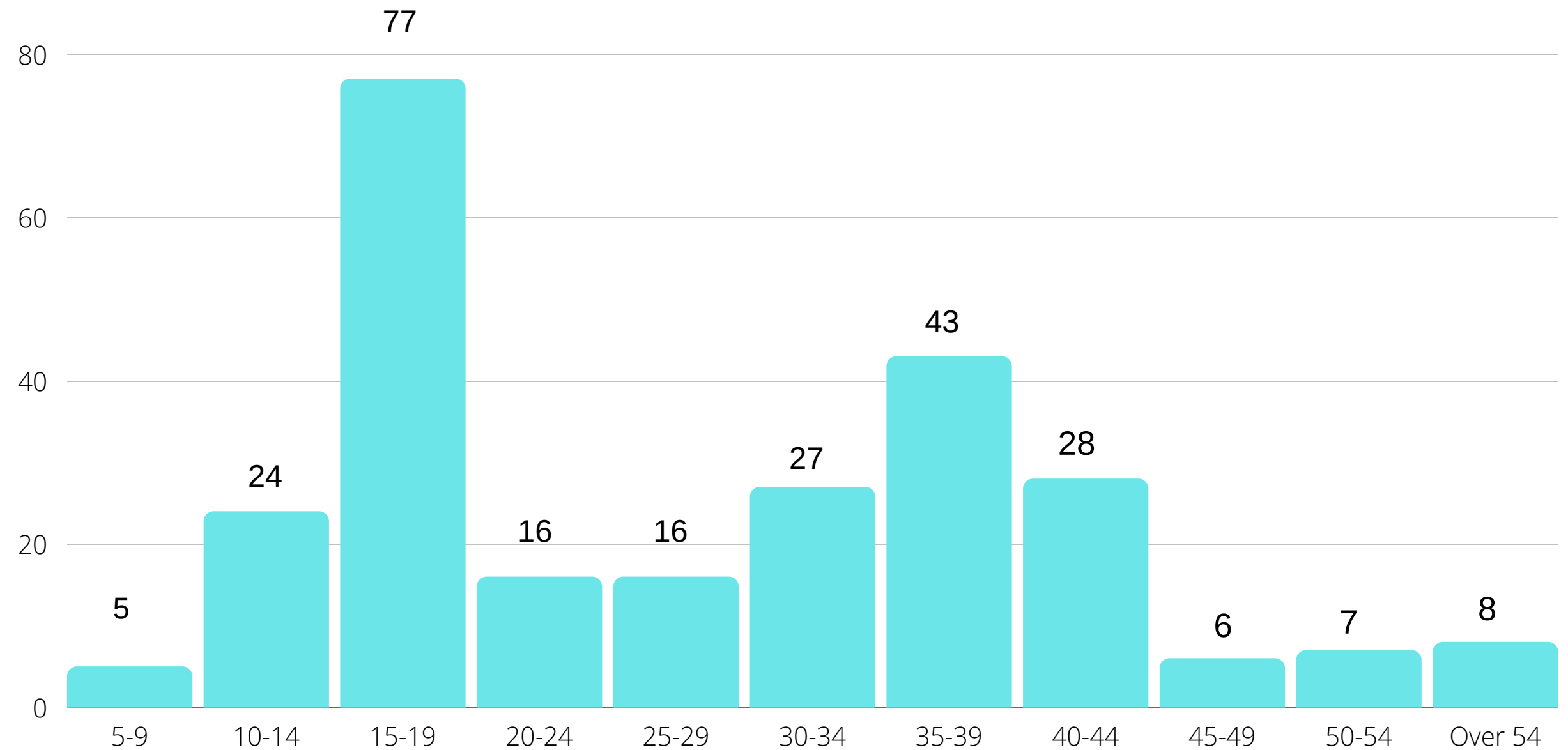
# Current Consultation Activities



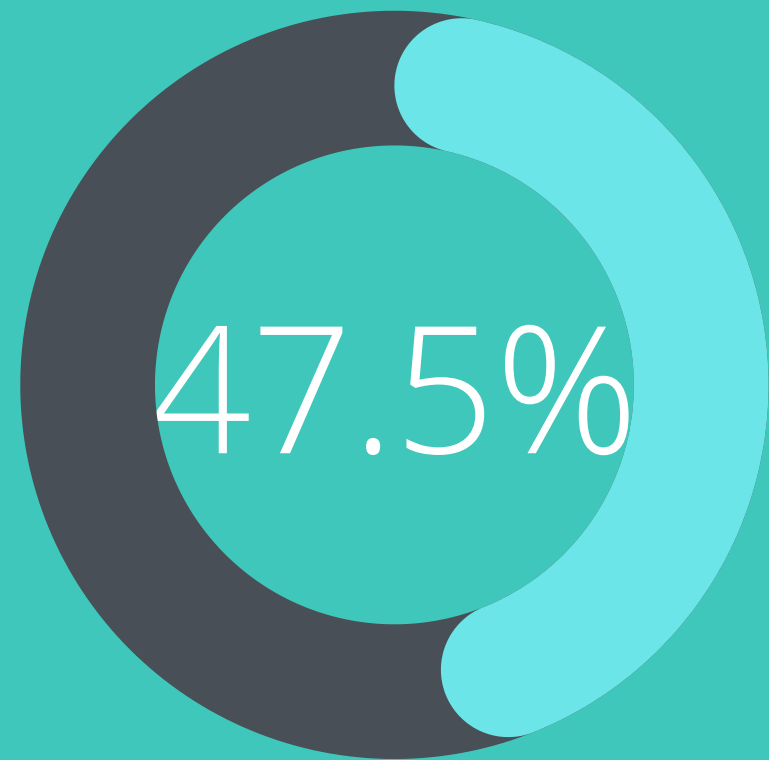
# Current Consultation Findings

After awarding designers Playce to create a master concept plan for the precinct. The City, Kalgoorlie-Boulder Youth Council and Playce developed an ideas layout. This layout went out to comment through community workshops and an online survey through CKB Unearthed

## 257 Survey Responses



# About the respondents



Respondents  
under the  
age of 25



69.2%  
Female



29.6%  
Male



1.6%  
Non-Binary  
or other



7.4%  
Identify as  
Indigenous or Torres  
Strait Islander

**257 Survey Responses**

# What Do you do there now?



52.9%

Use the existing  
skate park or  
playground



38.9%

Attend events

39.2%

Hang out with  
friends or family





## What stops you going to Kingsbury Park and Lord Forrest?

"There isn't much to do there."

"I'm concerned for my safety"

"People that sit around and consume alcohol"

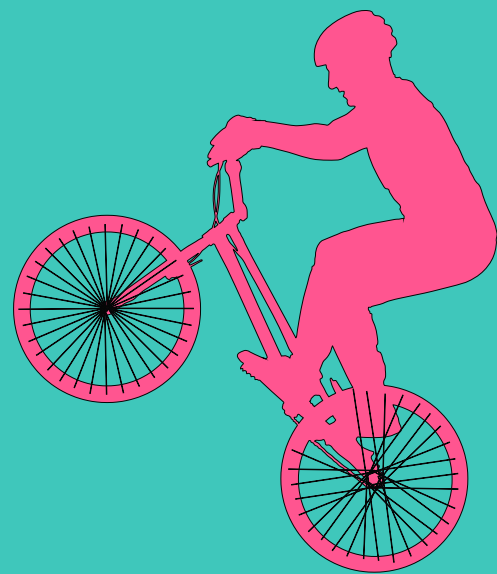
"Occasionally too hot with lack of shade. Sometimes dont allow my teenager to visit due to antisocial behaviours."

"Mum doesn't want to take me"

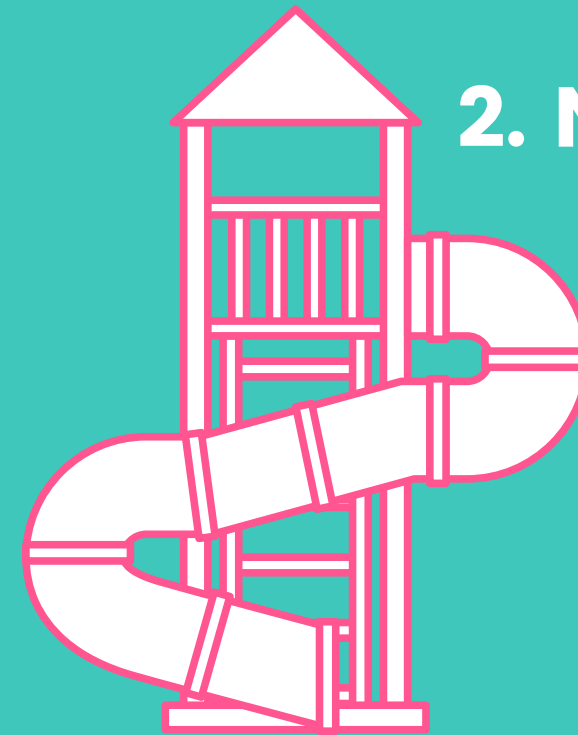




# Top three favourite elements in masterplan

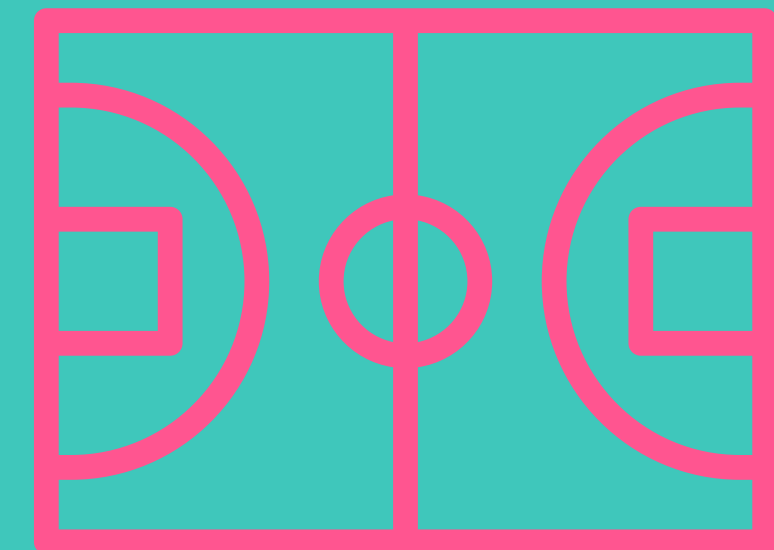


**1. Pump Track**



**2. New Playspace**

**3. Multi Sports Court**



## Lord Forrest as a Youth Hub top 3 elements

Outdoor Cinema  
60.3%



Music Events  
49.8%



Markets  
45.1%



When asked: How can Lord Forrest be improved as a Youth Hub?

35.2% of respondents said they want:

1. Youth Centre
2. Events and activities
3. Study and hangout spaces

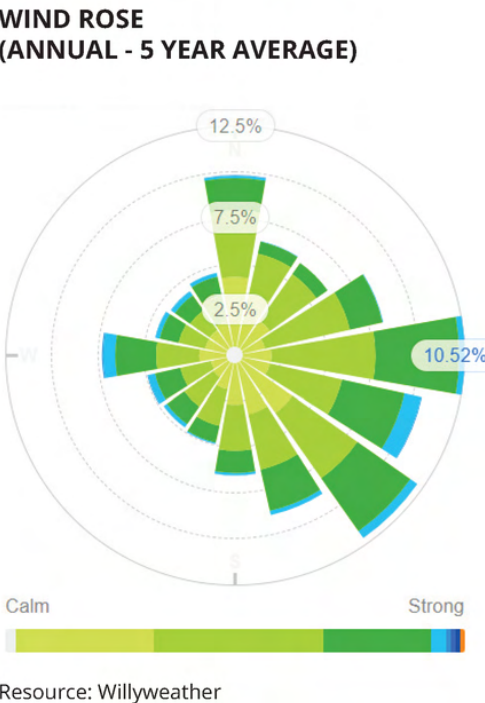
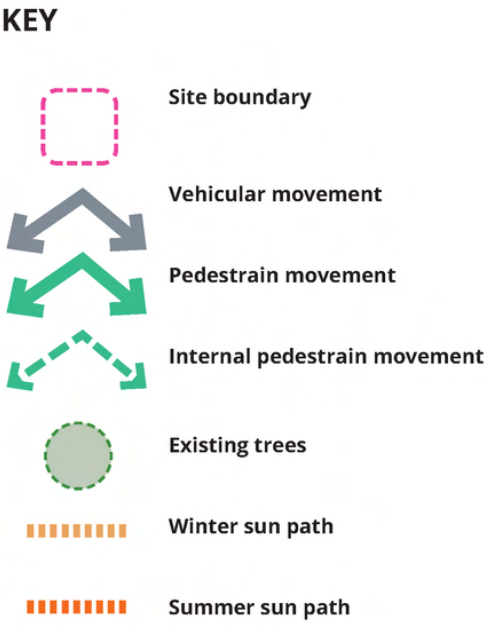
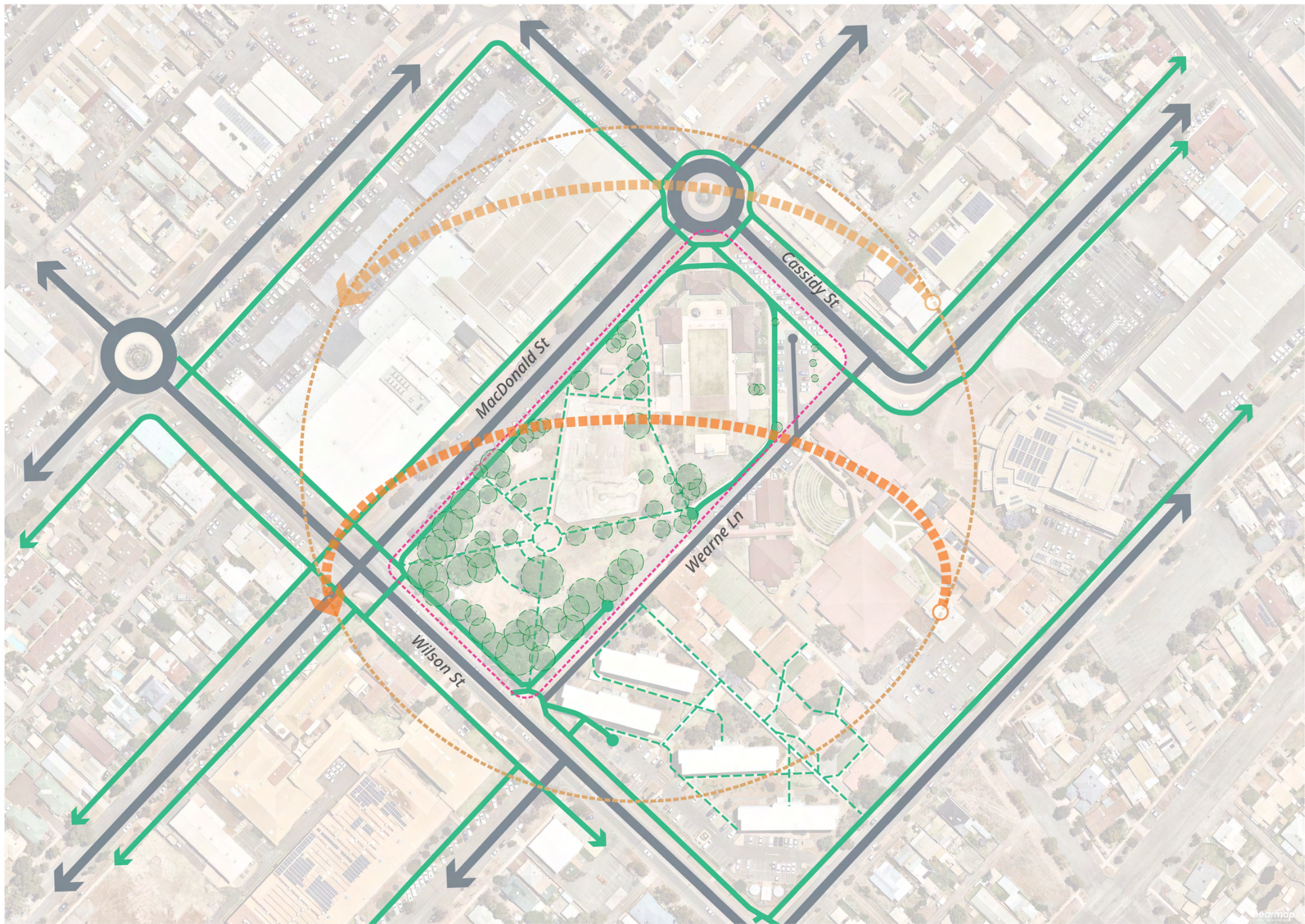


# Kalgoorlie youth precinct

## MASTERPLAN PRESENTATION



**PLA'CE**



**SITE ANALYSIS DIAGRAM - SITE CONTEXT**





# KEY

-  Site boundary
-  Entry point
-  Park fence
-  Commercial area
-  Art and culture
-  Education
-  Religious centre
-  Residential
-  Parking

## SITE ANALYSIS DIAGRAM - INTERFACE

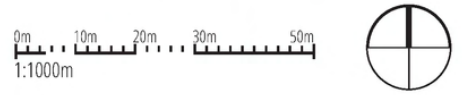
0m 10m 20m 30m 40m 50m  
1:1000m

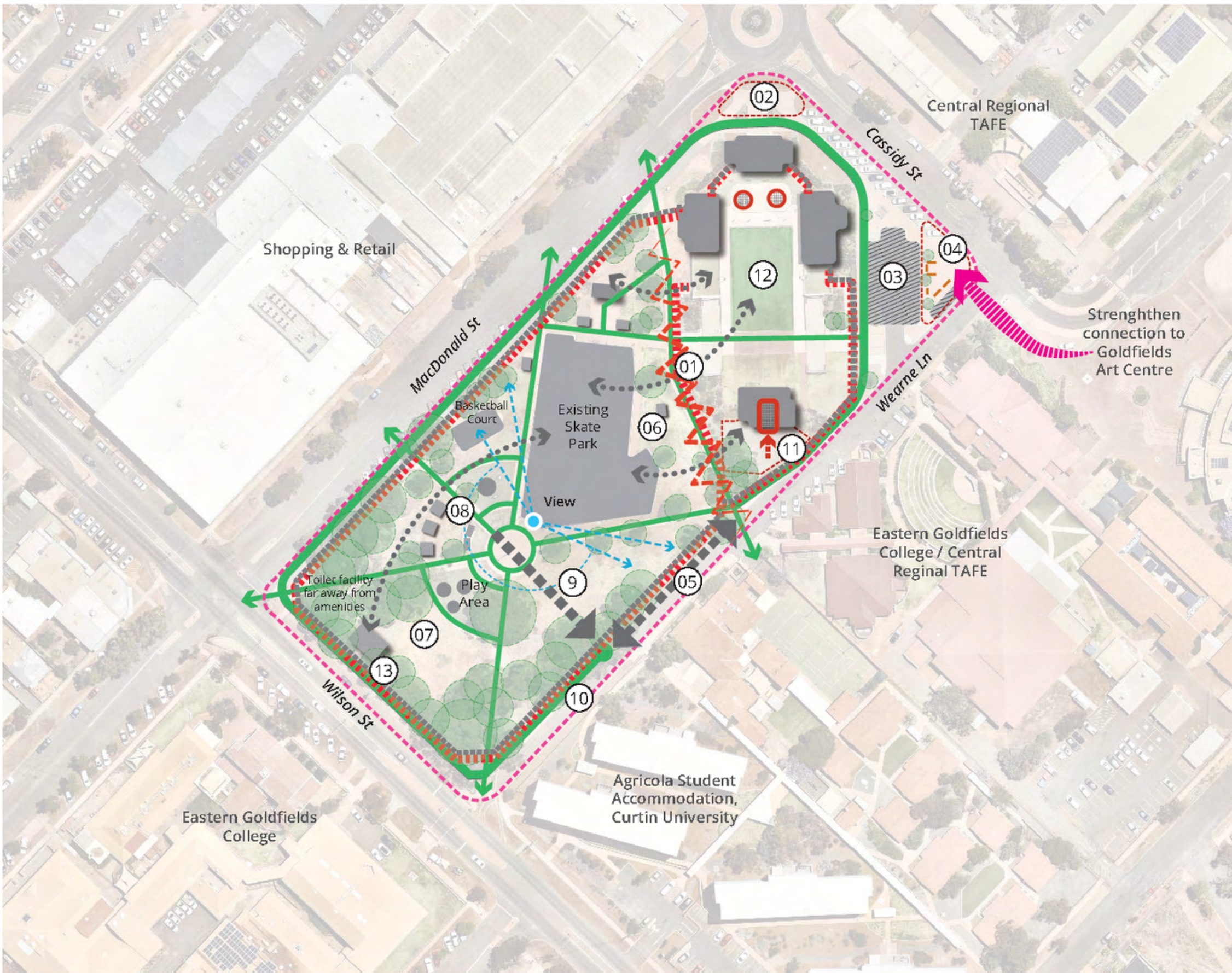




- KEY**
- Site boundary
  - Entry Point
  - Pedestrian
  - Existing Fence
  - Existing Skate Park+ Sport Court
  - Built Form
  - Lawn
  - Existing Garden Bed
  - Parking
  - Play Equipment
  - Sculpture/ Historial Element
  - Shelter
  - BBQ
  - Bench/Seating

**SITE ANALYSIS DIAGRAM - EXISTING CONDITION**





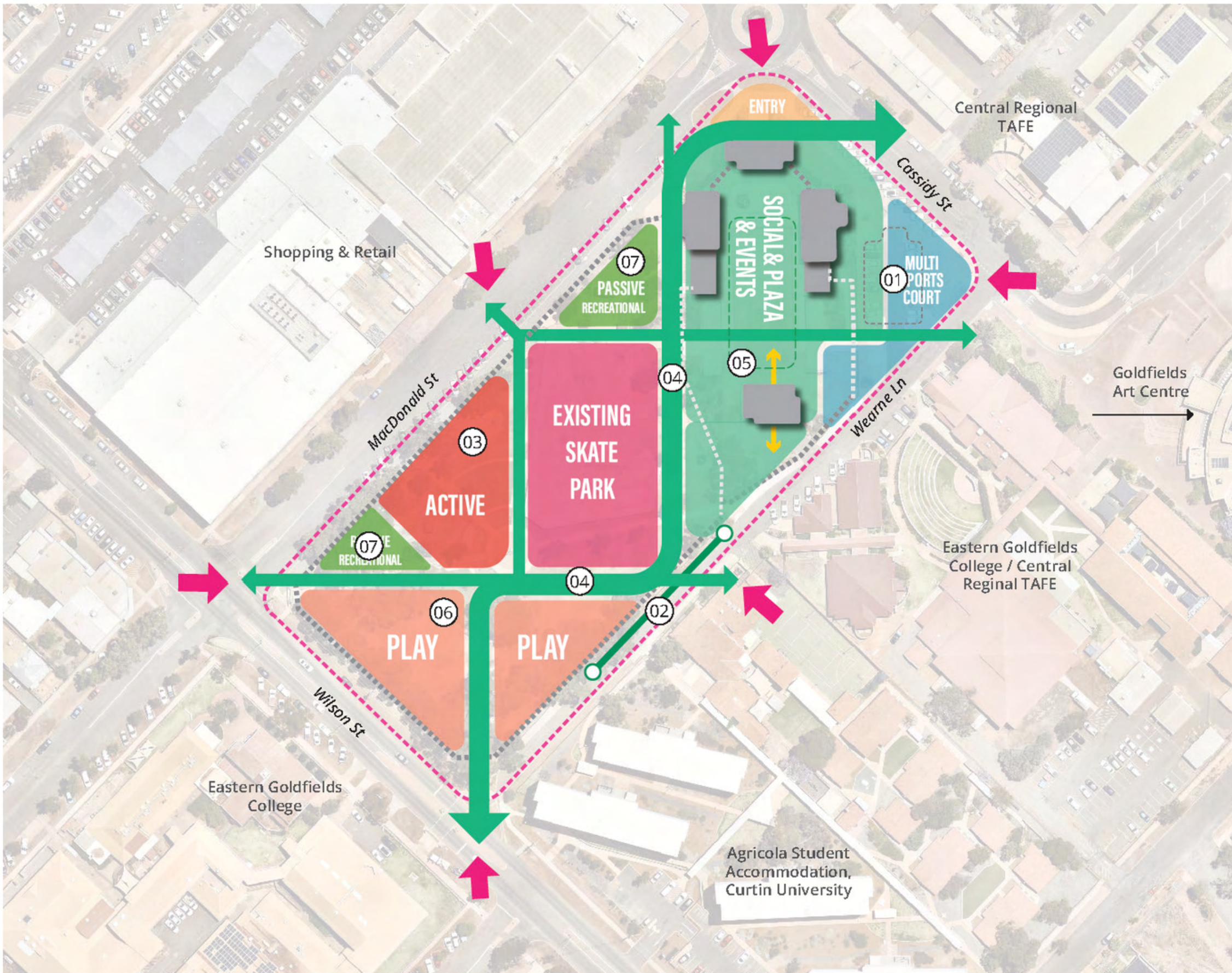
## KEY OBSERVATION

- 01 Fence acts as physical and visual barrier, no connections between lord forrest and Kingsbury park
- 02 Main entrance to Lord Forrest, lacking wayfinding detail and identity
- 03 Existing car park formed a physical barrier from street to Lord Forrest
- 04 Existing street corner provided seating opportunities, but lacking of shading.
- 05 Missing pedestrain connectivity
- 06 Open space next to skate park is lacking in amenities for socialising and resting
- 07 Existing mature trees provide good opportunities for passive recreational activities
- 08 Scattered amenities, lack spatial integrations
- 09 Potential pedestrain linkage, and potential space to provide programs and activities for students and local community on the east side of Wearne Ln
- 10 Lack of entry point
- 11 Stage currently doesn't provide change facilities, lacks power and ability to rig lights and sound. loading area doesn't service the stage well. opportunity to upgrade amendes, stage use and loading zone
- 12 Opportunity to upgrade lord forest with youth community rooms, toilets, and event amenities such as lighting and power
- 13 Opportunity to upgrade toilets facilities

## SITE ANALYSIS DIAGRAM - CONSTRAINTS AND OPPORTUNITIES

0m 10m 20m 30m 50m  
1:1000m





# KEY

- Site boundary
  - Entry points and access to reserve
  - Strengthen connectivity through out the park to and from reserve to key destinations
  - Improve pedestrian connectivity with additional path
  - Fence to remain
  - Upgrade fence with permeable adjustable fencing
  - Built form to remain
  - Social/events space/plaza
  - Multi Sports Court
  - Passive recreational zone
  - Play zone
  - Active zone
  - Existing skate park
  - Entry zone
- 01 Relocate parking to improve entrance experience to Lord Forester and increase viable space for the community to enjoy
  - 02 Add additional paving to improve pedestrian connectivity
  - 03 Add additional Recreational activities adjacent to skate park to create active zone
  - 04 Strengthen social areas and provide key picnic, BBQ and informal seating
  - 05 Enhance Lord Forrester Heritage through interpretive design. Increase community value of the buildings by re purposing into vibrant events, social and interactive youth space.
  - 06 Relocate and upgrade play experience to suit a range of ages and create place specific play experience.
  - 07 Maintain passive recreational lawn for events and food truck parking

## OPPORTUNITIES DIAGRAM

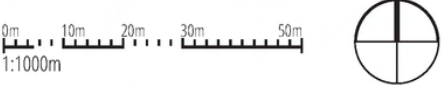
0m 10m 20m 30m 50m  
1:1000m





- KEY**
- Existing buildings
  - New buildings
  - Seating and Parkour element
  - Proposed trees
  - Existing trees
  - Shelter
  - Paving - softfall rubber
  - Paving
  - Primary path
  - Lawn
  - Softfall mulch
  - Planting
  - Fence - permanent
  - Fence - retractable

# MASTERPLAN





## INDEX - KINGSBURY PARK

- 01 Existing skate park
- 02 Pump track for all skill levels from beginner to advanced, including rollers and banked turns
- 03 Rope Scramble features various challenges for all ages including up, down and across climbing and scrambling
- 04 Feature Play tower with large slides and nets, climbers and interactive elements
- 05 Interactive Social Spine with lighting feature, shade and colour, seating nodes and planting pockets
- 06 Upgraded existing toilet
- 07 Multi-sport Court basketball and netball line marking and other ball games
- 08 Parkour and active zone parkour vaults that double as seating and fitness area
- 09 Food truck parking
- 10 Lawn area social spill out and informal sports
- 11 Indented parking replaces parking area removed
- 12 Nature play, with planting and sculptural play
- 13 Swing zone featuring various swing types including large basket swing
- 14 Accessible interactive play elements
- 15 Fence - retractable Retractable fence that is kept open during operational hours for ease of access, close during ticketed events and after hours

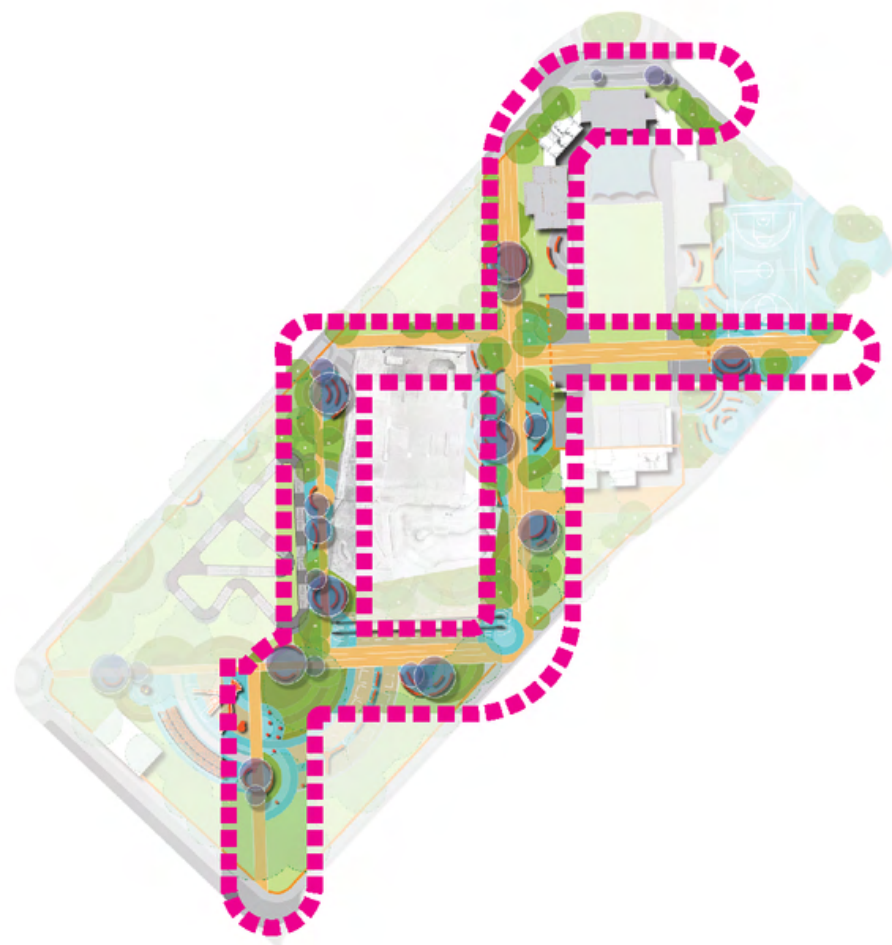
## INDEX - LORD FORREST

- A Entry control and Management facilities
- B New toilet and change room
- C New kitchen
- D Shade structure over outdoor amenity area
- E Community office and meeting room
- F Community activity space
- G Upgrade existing stage
- H New stage facilities including holding space, change rooms, loading area and storage space

0m 10m 20m 30m 50m  
1:1000m



MASTERPLAN



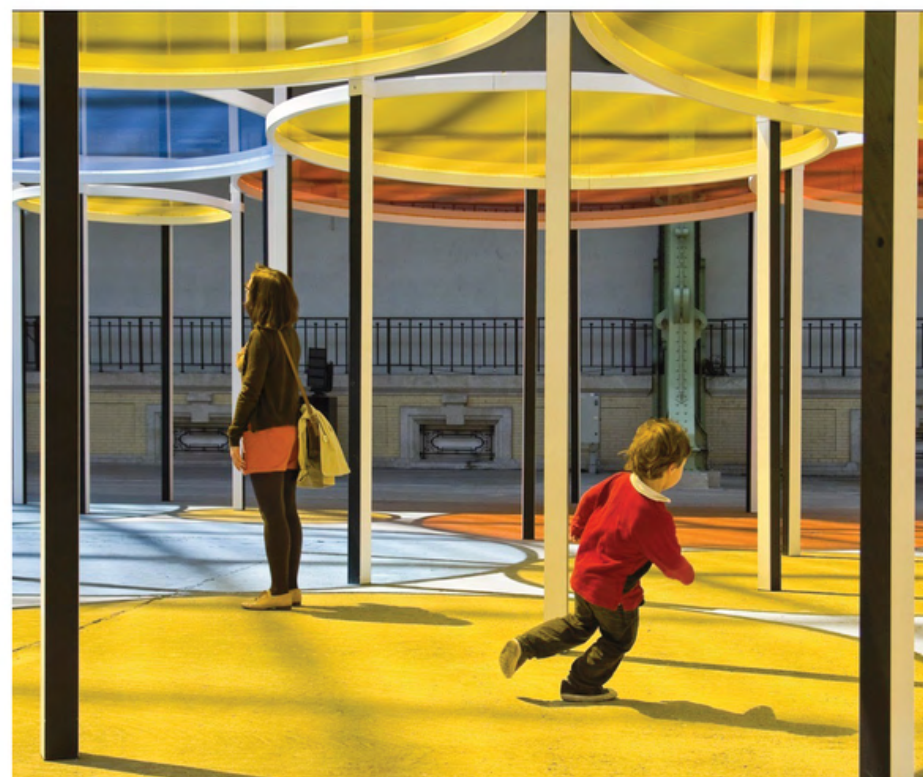
The social spine is an interactive walk way with social nodes featured in locations near key activities. These include BBQs, shelters and other amenities. The pathways and structures also interpret the historical context of Lord Forrest Precinct as a swimming pool, by introducing themes of water and swimming with use of blue transparent materials, lighting and interactive playful experiences.



SHADE AND SOCIAL SPACES



INTERACTIVE LIGHTING AND PLAY



COLOURS AND MATERIALS



SCULPTURE

## SOCIAL SPINE - STRUCTURE / SCULPTURE / ART



PARKOUR ELEMENTS



CLIMBING WALL

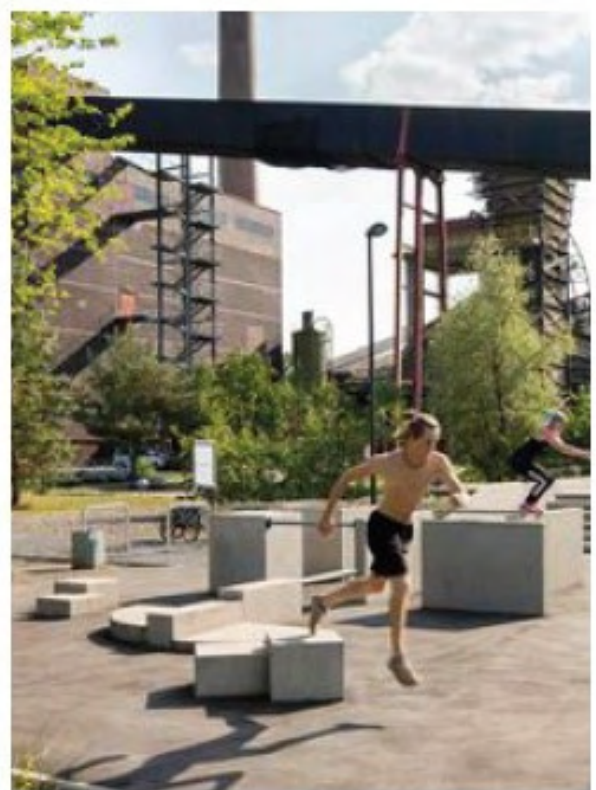
The multi-sports court and parkour area, is a hard stand area that offers various ball-sports such as basketball, netball and potential for other sports like volleyball and tennis. This space includes a rebound wall for informal ball games and doubles as a great bouldering wall. The parkour zone is a fitness and parkour zone with parkour bars and vaults that can be used for fitness and play. This area also allows for the parkour vaults to become informal social seating and study area especially given the proximity to the educational centers. This activates the Lord Forrest Precinct outside of event times and provides a great active and fitness space for young people.



MULTI SPORTS COURT & REBOUND WALL



FITNESS ELEMENTS



PARKOUR ELEMENTS

## MULTI SPORTS COURT - PARKOUR / SPORTS / ACTIVE



The Pumps track was a popular element voted for by the community during the consultation phase. This area is located next to the existing skate park to create an active wheeled sports zone. The pump track is a circuit of rollers, banked turns and other features, that bike and scooter riders, roller skaters and skateboarders can all use. It also provides entry level experience, and more experienced users a like, a space for all ages to enjoy.



PUMP TRACK



PUMP TRACK



PUMP TRACK

## PUMP TRACK - WHEEL SPORTS / ACTIVE ZONE



FOOD TRUCK AREA



STAGE AND EVENTS SPACE

Passive recreational space provide opportunities for various events and programs to occur, as well as informal social gathering. The space south of the existing Lord Forrest stage is to be upgraded, with shade, light and sound rigging as well as amenities for performers such as storage, change rooms and improved loading zone. A passive recreation zone is maintained north of the existing skate park. This lawn area provides flexible space for both informal picnics and ball sports but also provides a space for food trucks to be positioned during special events. Intimate and vegetate seating nodes are dotted throughout the park and along side the lawn areas to provide quieter social spaces away from the busy activities.

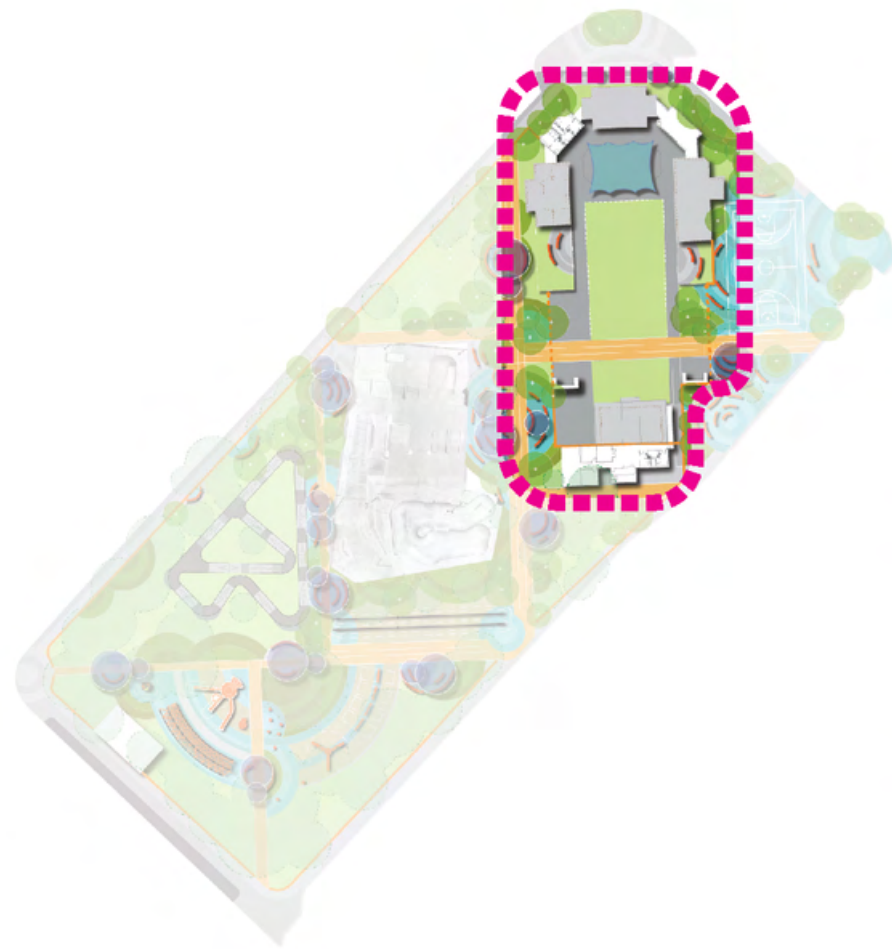


MARKET SPACE



VEGETATED SPACE FOR RESTING AND SOCIALIZING

## PASSIVE RECREATIONAL - SOCIAL SPACE / EVENTS SPACE



Lord Forrest Precinct will be upgraded with additional amenities, to increase its capacity for more community events and programs. Retractable fencing is introduced to allow better connection from the Lord Forrest Precinct to Kingsbury Park. It also allows for the fencing to be closed for ticketed events as it currently functions. This addition allows the space to be flexible between events and open to general public as well as closed in evenings to address safety concerns.

The Lord Forrest buildings will be refurbished to include new toilets, change rooms, kitchen, storage, community room and offices.

The community room allows for flexible use, with various youth events and activities that can be hosted including group meetings, maker space, and other community groups.

## LORD FORREST PRECINCT



OUTDOOR CINEMA / MOONLIGHT CINEMA



STAGE AND EVENTS SPACE



NEW FACILITIES FOR MAKER SPACE, STORAGE, COMMUNITY MEETING



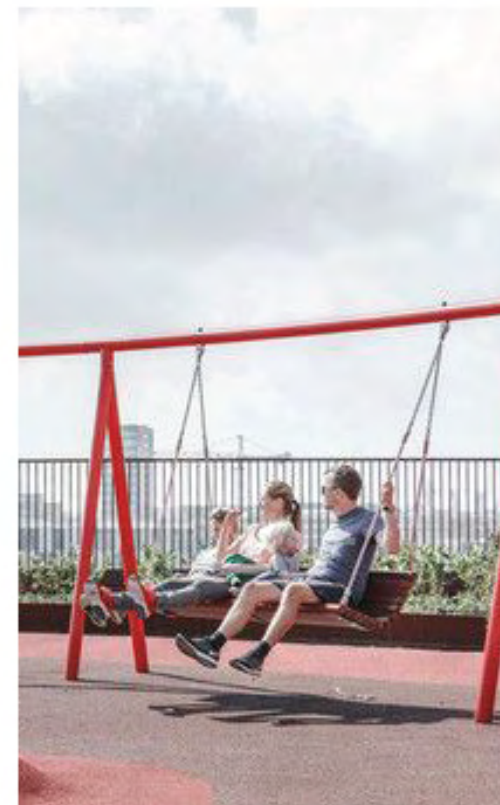
EXISTING STAGE TO BE UPGRADED, INCREASE ITS CAPACITY FOR MORE PROGRAMS AND EVENTS



The playspace provides playful experiences for all ages and abilities. A large iconic tower punctuates the spaces, featuring long, curly slides reminiscent of the water slide that used to be part of the old swimming pool. The playspace also includes a net and rope scramble area for active play but also acts as social hangout nets for older teens and young people. Other elements includes large swings, spinners and flying fox, offering experiences for teens, adults and children.



FLYING FOX



CURVED SWING BANK FOR ALL AGES & ABILITIES



ROPE AND NET PLAY



SOCIAL ACCESSIBLE SPINNER



PLAY TOWER WITH MULTIPLE SLIDES

**PLAY - INTERACTIVE / ACTIVE / SOCIAL**



## INDEX - KINGSBURY PARK

- 01 Existing skate park
- 02 Pump track for all skill levels from beginner to advanced, including rollers and banked turns
- 03 Rope Scramble features various challenges for all ages including up, down and across climbing and scrambling
- 04 Feature Play tower with large slides and nets, climbers and interactive elements
- 05 Interactive Social Spine with lighting feature, shade and colour, seating nodes and planting pockets
- 06 Upgraded existing toilet
- 07 Multi-sport Court basketball and netball line marking and other ball games
- 08 Parkour and active zone parkour vaults that double as seating and fitness area
- 09 Food truck parking
- 10 Lawn area social spill out and informal sports
- 11 Indented parking replaces parking area removed
- 12 Nature play, with planting and sculptural play
- 13 Swing zone featuring various swing types including large basket swing
- 14 Accessible interactive play elements
- 15 Fence - retractable Retractable fence that is kept open during operational hours for ease of access. close during ticketed events and after hours

## INDEX - LORD FORREST

- A Entry control and Management facilities
- B New toilet and change room
- C New kitchen
- D Shade structure over outdoor amenity area
- E Community office and meeting room
- F Community activity space
- G Upgrade existing stage
- H New stage facilities including holding space, change rooms, loading area and storage space

0m 10m 20m 30m 50m  
1:1000m



MASTERPLAN